



Fig. 1 – Render model.

The SKY CLIMBER® **self-powered platform model SC** is designed to provide efficient working access for permanent installations in many types of buildings and structures. It is one of our most used cradles for monorails and roofcars and has been applied in various permanent installations worldwide.

This model is equipped with aluminum cladding and all the necessary safety features to guarantee worker safety. With the choice between Sky Grip or Sky Lock the safety features are adaptable to every situation. Wire winders for cable storage ensure that the self-powered cradle can be used safely in areas where no free hanging ropes are allowed.

Designed in conformity with the following standard Directive: European Directive of Machinery 2006/42/CE and under harmonized standards UNE-EN 1808 "Safety requirements for suspended platforms. Design calculations, stability criteria, construction. Essays".



1. DESCRIPTION OF THE EQUIPMENT:

SELF-POWERED PLATFORM – MAIN COMPONENTS:

- | | |
|--|--|
| <ol style="list-style-type: none"> 1. Safety rope. 2. Suspension rope 3. Secondary brake. 4. Traction hoist, 1000# capacity. 5. Wire winder protection. 6. Central control box with anti-tilting device and tool outlet for 1 Ph hand tools. 7. Cradle with aluminum cladding. 8. Bottom limit trip bar. 9. Top limit switch + ultimate top limit switch. 10. No power descent lever. 11. Emergency descent hand wheel. 12. Sky OL (electronic overload inside Central Control Box). | <ol style="list-style-type: none"> 13. Rope reel motor. 14. Foot step. 15. Twin drum wire winder. 16. Wall roller. 17. Caster wheels. 18. Electric supply cable collection bin. 19. Eye bolt. 20. Striker plate. |
|--|--|

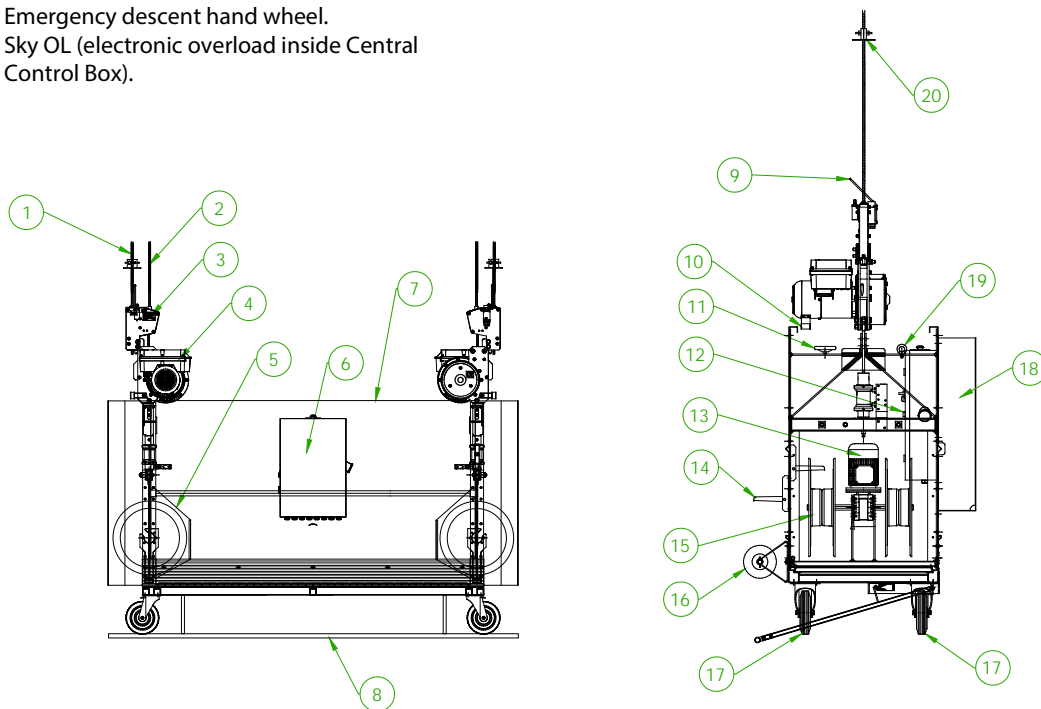


Fig. 2 – References.

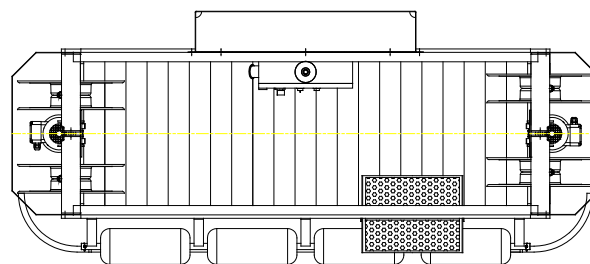


Fig. 3 – Top view: self-powered platform.

2. TECHNICAL SPECIFICATIONS:

GENERAL:

Maximum height:	0 - 120 M.
Dead weight:	350 Kg.
Finished and painted:	Galvanized and aluminum cladding.
Color RAL:	Can be customized per customer preference.
Control panel:	In platform.
Power supply:	III + PE 400V – 50Hz 16A.

SELF-POWERED PLATFORM:

Platform:	Fixed length aluminium w/ side frames, handrails, steel end stirrups, 2 wall rollers and 4 caster wheels.
Length:	1,6 m. to 4 m. (or more if necessary)
Platform rated load:	240 Kg. / 300 Kg.
Max. allowed persons:	2.
Finished cradle:	Aluminum cladding.
Motorized elevation:	Electric man-rated traction hoist complete with: plug outlet for central control box, plug outlet for top limit switch, Sky OL build in.
Nº wire ropes:	Compatible with 2 or 4 rope systems.
Diameter wire ropes:	8,4 mm.
Drum:	Twin drum wire winder.
Support on facade:	By rollers
Bottom Safety bar:	Yes.
Emergency descent:	No power descent lever + hand wheel.
Overload:	Sky OL (electronic overload inside Central Control Box)
Control box:	Central control box with anti-tilting device and tool outlet.

TRAVERSING:

Motorized traversing:	Yes.
Traversing through:	Trolleys (manual or motorized).
Traversing speed:	7,5 m/min.

REGULATION:

Regulation:	Design and manufacturer under UNE EN 1808:2015. European 2006/42 CE
Certificate:	ISO 9001:2015
Certificate:	CE certificate.

3. CONTROLS:

The self-powered platform "SC" model has a control panel:

CENTRAL CONTROL BOX ON PLATFORM:

- 21. Tool Outlet 230 V 10A 1 ph.
- 22. Main switch ON-OFF with interlock.
- 23. Trolley command switch.
- 24. Selector switch hoists (I, I+II, II).
- 25. Bottom limit override.
- 26. Indication light (red) safety circuit.
- 27. Emergency push button.
- 28. Test button.
- 29. Push button UP platform.
- 30. Push button DOWN platform.

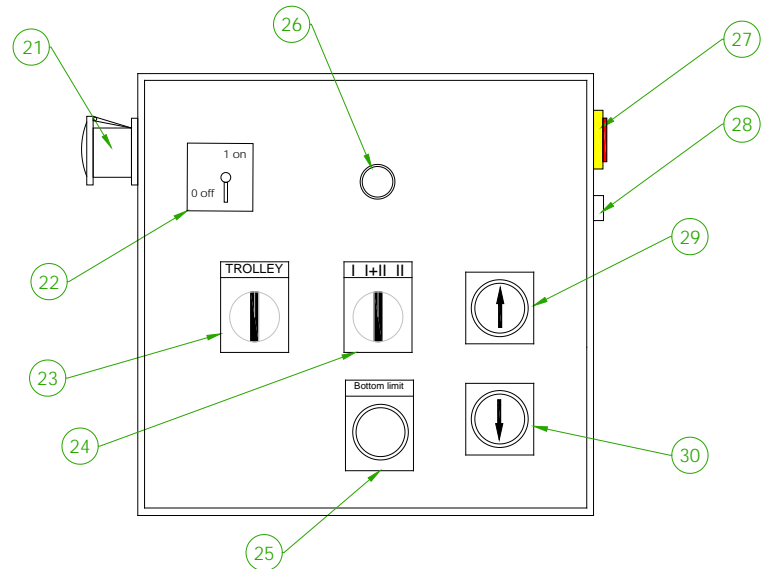


Fig. 4 – Control panel on platform.

4. SAFETY DEVICES:

To ensure safe operation without danger to personnel, the machine is fitted with a number of safety devices which monitor the correct operation of the various components and operate in the event of a breakdown or fault.

ELECTRICAL EMERGENCY DEVICES	SAFETY DEVICES
<p>Emergency push button. Protection to earth. Overload protection. Sky OL (electronic overload inside Central Control Box) Power supply Phases control. Emergency relay category C. Ultimate top limit switch assy, Sky Lock II mounted with striker Plate.</p>	<p>Limit switches. Warning sounds. Thermal magnetic protection for all motors. Anti-tilting device and tool outlet. Over speed safety device. Slack rope detector. Safety bar for descent. Automatic leveling control in motors.</p>

Note: The machine and all components described in this technical sheet can be modified any time by the manufacturer without prior warning.